

*Paul
Haines*



POCKET

KNIVES



MADE IN U.S.A. BY
**CAMILLUS
CUTLERY
COMPANY**
CAMILLUS, N. Y.

Tear off this tab and paste knife description and illustration in the Pocket Knife section of your catalog.

FULL SIZED, HUSKY ELECTRICIAN'S KNIFE

CAMCO No. 229

Handle: Supertough Black Plastic.

Blades: Spear and Screwdriver with sharp edge for scraping insulation. Finest steel, hand sharpened.

Length Closed: 3 $\frac{3}{4}$ inches

Linings: Solid brass with lock.

Packed: 1/2 doz. in box; 3 lbs. per doz.



1/2 Actual Size

30
ITY

CAMILLUS CUTLERY COMPANY

...THE POPULAR PRICED GOOD QUALITY LINE

CAMCO QUALITY

CAMCO pocket knives are made by highly skilled craftsmen in one of the largest and most modern factories in the country.

All blades are made of the best high carbon cutlery steel, electronically hardened and tempered. Each blade is mirror polished on both sides and individually sharpened by hand to a keen, long lasting edge. Blades open and close with a positive "click" yet operate easily. Close tolerances in manufacture insure long life and enduring service.

Great care is taken to maintain the attractive appearance of all CAMCO pocket knives, which insures consumer sales appeal. Uniformity of quality assures consumer satisfaction and re-orders.



CAMCO TURNOVER

Attractive appearance, good quality and popular prices all make CAMCO one of the fastest moving pocket knife lines. Consumer satisfaction of CAMCO quality and appearance means not only many sales but also repeat sales. With the CAMCO line the sales come fast, easily and often.

CAMCO DISPLAY

Most CAMCO pocket knives come packed on gaily colored attractive sales cards which are your best "silent salesmen". These cards are designed, not only to attract attention and to sell pocket knives but are also designed to be compact. A strong sales message is placed in a minimum of space so that the card will not take up excessive space on counters or shelves.

MADE IN U. S. A. BY

**CAMILLUS
CUTLERY
COMPANY**

CAMILLUS, N. Y.

ONE OF THE OLDEST AND LARGEST
MANUFACTURERS OF KNIVES IN AMERICA

Now!
**a bigger,
 better BARLOW**

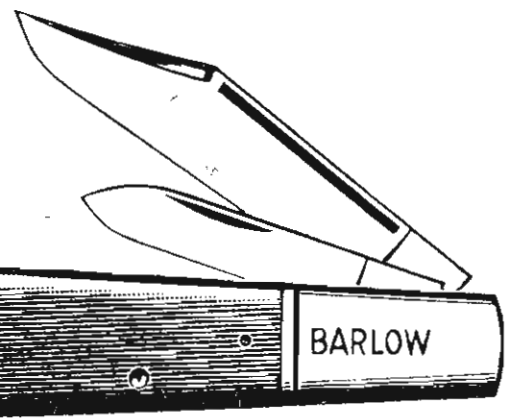


A solid handle, heavy-duty version of this well known and popular knife.

Extra keen blades are made from special high carbon cutlery steel. Carefully hardened and tempered and individually hand sharpened. Heavy steel bolsters keep blades firmly in position.

Smart, solid, unbreakable plastic handles add flash and eye appeal which make fast sales over the retail counter.

Packed on new striking display card—that will really sell knives.



Actual Size

No. 636 ASS'T.

Handles—8 solid black, 4 solid red.

NOT AVAILABLE Unbreakable plastic.

No. ~~636-A~~ ASS'T. 653

Handles—All solid black.
 Unbreakable plastic.

Blades—Clip and pen.

Linings—Steel.

Bolsters—Steel.

Length closed—3 $\frac{3}{8}$ ".

Packed—One dozen on three color Barlow card.

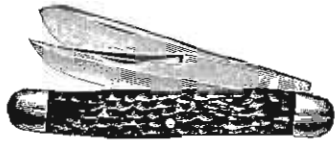
Weight per doz.—1 $\frac{3}{4}$ lbs.



MADE IN U.S.A. BY
**CAMILLUS
 CUTLERY
 COMPANY**
 CAMILLUS, N. Y.

ONE OF THE OLDEST AND LARGEST
 MANUFACTURERS OF KNIVES IN AMERICA

OPEN STOCK POCKET KNIVES by



No. 214

HEAVY DUTY GAME KNIFE

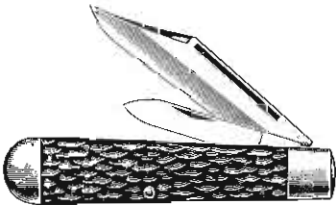
Handle - Stagged
Blades - Sabre clip, long spey
Linings - Brass
Bolsters - Nickel silver
Length closed - 3-7/8"
Packed - 1/2 dozen in a box
Weight per dozen - 2-1/4 lbs.



No. 216

2-BLADE JACK KNIFE

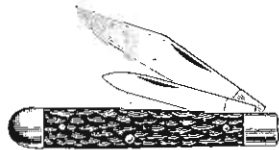
Handle - Unbreakable Nu-Pearl
Blades - Spear, screwdriver-
caplifter
Linings - Brass
Length Closed - 3-3/8"
Packed - 1/2 dozen in box
Weight per dozen - 1-1/2 lbs.



No. 227

SLEEVEBOARD JACK KNIFE

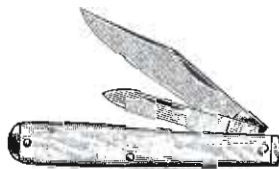
Handle - Stagged, unbreakable
plastic
Blades - Clip, pen
Linings - Brass
Bolster - Nickel silver
Length Closed - 3 3/8"
Packed - 1 dozen in a box
Weight per dozen - 1 7/8 lb.



#213 253

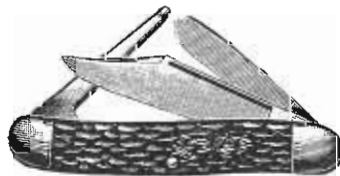
PONY JACK KNIFE

Handle - Stagged unbreakable
plastic
Blades - Clip and pen
Linings - Brass
Bolster - Nickel silver
Length Closed - 2 7/8"
Packed - 1 dozen in a box
Weight per dozen - 1 lb.



#222 262

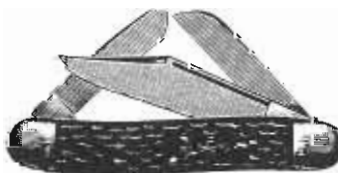
Pony Jack Knife, same as above
but with Nu-Pearl unbreakable
plastic handle and nickel silver
tips.



No. 307

PREMIUM STOCK KNIFE

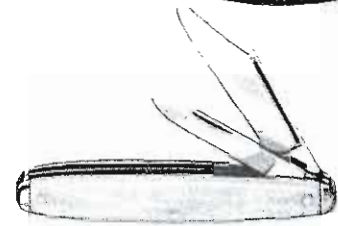
Handle - Stagged, unbreakable
plastic
Blades - Clip, spey, punch
Linings - Brass
Bolster - Nickel silver
Length Closed - 3 1/2"
Packed - 1 dozen in a box
Weight per dozen - 1 7/8 lb.



No. 308

PREMIUM STOCK KNIFE

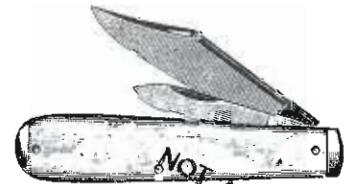
Handle - Stagged, unbreakable
plastic
Blades - Clip, spey, sheepfoot
Linings - Brass
Bolster - Nickel silver
Length Closed - 3 1/2"
Packed - 1 dozen in a box
Weight per dozen - 1 7/8 lb.



No. 210

EQUAL END JACK KNIFE

Handle - Nu-Pearl
Blades - Clip, Pen
Linings - Brass
Tips - Nickel Silver
Length Closed - 3 3/8"
Packed - 1 dozen in box
Weight per dozen - 1 1/2 lbs.



No. 800

SWELL END JACK KNIFE

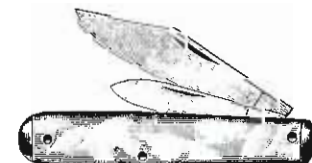
Handle - Unbreakable Nu-Pearl
Blades - Clip, Pen
Linings - Brass
Length Closed - 3-3/8"
Packed - 1/2 dozen in a box
Weight per dozen - 1-1/2 lbs.



No. 801

SWELL END JACK KNIFE

Handle - Unbreakable Nu-Pearl
Blades - Clip, Screwdriver-
caplifter
Linings - Brass
Length Closed - 3-1/8"
Packed - 1 dozen in a box
Weight per dozen - 1-1/4 lbs.



No. 802

SWELL END JACK KNIFE

Handle - Unbreakable Nu-Pearl
Blades - Clip, pen
Linings - Brass
Length Closed - 3-1/8"
Packed - 1 dozen in a box
Weight per dozen - 1-1/4 lbs.

MADE IN U. S. A. BY
**CAMILLUS
CUTLERY
COMPANY**
CAMILLUS, N. Y.

ONE OF THE OLDEST AND LARGEST
MANUFACTURERS OF KNIVES IN AMERICA

OPEN STOCK POCKET KNIVES

by



No. 291

SLIM SENATOR PEN KNIFE

Handle - Nu-Pearl
Blades - Spear, pen
Linings - Brass
Tips - Nickel silver
Shackled
Length Closed - 2 13/16"
Packed - 1 dozen in a box
Weight per dozen - 3/4 lb.



No. 293 **NOT AVAILABLE**

SENATOR PEN KNIFE

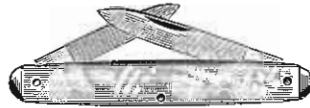
Handle - Nickel silver
Blades - Spear, pen
Length Closed - 3 1/8"
Packed - 1 dozen in a box
Weight per dozen - 7/8 lb.



No. 298

SENATOR PEN KNIFE

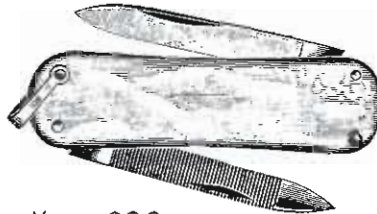
Handle - Nu-Pearl
Blades - Spear, File
Linings - Brass
Tips - Nickel Silver
Shackle - Nickel Silver
Length Closed - 3 1/8"
Packed - 1/2 dozen in box
Weight per dozen - 1 lb.



No. ~~292~~ 272

SENATOR PEN KNIFE

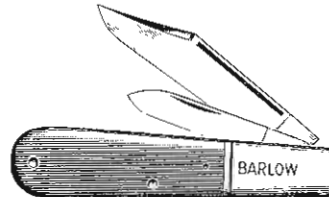
Handle - Nu-Pearl
Blades - Spear, Pen
Linings - Brass
Tips - Nickel Silver
Length Closed - 3 1/8"
Packed - 1/2 dozen in box
Weight per dozen - 1 lb.



No. 296

2-BLADE LOBSTER PEN KNIFE

Handle - Unbreakable Nu-Pearl
Blades - Spear and flexible file
Linings - Brass
Length Closed - 2-1/4 lbs.
Packed - 1 dozen in a box
Weight per dozen - 3/4 lbs.



No. ~~220~~ 228

BARLOW KNIFE

Handle - Black unbreakable plastic
Blades - Clip, pen
Linings - Steel
Bolster - Steel
Length Closed - 3 3/8"
Packed - 1 dozen in a box
Weight per dozen - 1 3/4 lb.

No. 221 **NOT AVAILABLE**

Same as No. 220 above, but with red unbreakable plastic handle.



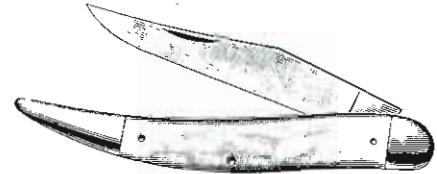
No. ~~215~~ 255

CORKSCREW KNIFE

Handle - Nu-Pearl
Blades - Spear with caplifter on tang, corkscrew
Linings - Brass
Tips - Nickel Silver
Length Closed - 2-13/16"
Packed - 1 or 2 dozen in box
Weight per dozen - 12 ozs.

No. 217 **NOT AVAILABLE**

Same as No. 215 above, but with nickel silver handle.
Weight per dozen - 7/8 lb.



No. 104 **NOT AVAILABLE**

SWITCHBACK KNIFE

Handle - Red unbreakable plastic
Blade - Long clip
Linings - Brass
Bolster - Nickel silver
Length Closed - 4 3/8"
Packed - 1 dozen in a box
Weight per dozen - 1 1/2 lb.

No. 105 **NOT AVAILABLE**

Same as No. 104 above, but with white onyx unbreakable plastic handle.

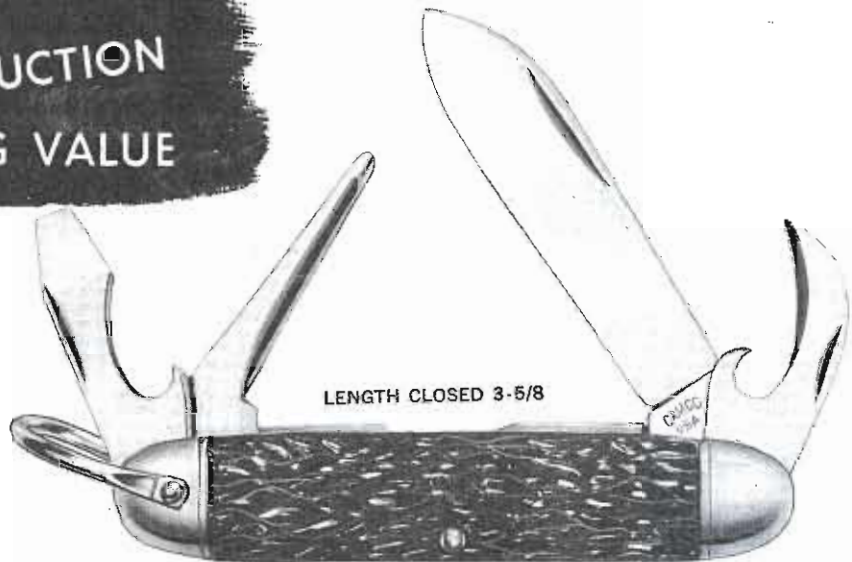
MADE IN U. S. A. BY
**CAMILLUS
CUTLERY
COMPANY**
CAMILLUS, N. Y.

ONE OF THE OLDEST AND LARGEST
MANUFACTURERS OF KNIVES IN AMERICA

A *New* CAMP KNIFE



FULL SIZE
SOLID CONSTRUCTION
BIG VALUE



No. **410** ILLUSTRATION ACTUAL SIZE

A real, husky - he-man's knife...with lots of value.

BLADES - Cutting blade, New-type Canopener, Leather Punch-awl, Screwdriver-caplifter.

HANDLES - Staged Solid Plastic
SIDE LININGS - Solid Brass

STEEL - Top-quality, high-carbon cutlery steel electronically hardened and tempered. Cutting blade hand sharpened.

CANOPENER - New type - cuts down into can - leaves clean edge-turned in.

Packed - 1 dozen with attractive display card in carton.

Weight per dozen - 3 lbs.



as advertised in
THE SATURDAY EVENING
POST
and
Outdoor Life

MADE IN U. S. A. BY
**CAMILLUS
CUTLERY
COMPANY**
CAMILLUS, N. Y.

ONE OF THE OLDEST AND LARGEST
MANUFACTURERS OF KNIVES IN AMERICA

KEY CHAIN POCKET KNIFE ASSORTMENTS by



Two beautifully made novelty pocket knives that are sure-fire sellers. Blades made of top-quality steel, hand-sharpened to a keen, lasting edge. Handles of lustrous, unbreakable plastic pearl. Both of these are nicely finished and serviceable knives with lots of customer appeal.

No. 613

KEY KNIFE ON KEY CHAIN



Handle - Unbreakable plastic Nu-pearl
 Blade - 1 blade, spear point
 Length Closed - 2 1/16"
 Packed - 1 doz. on a colorful display card as illustrated
 Weight Packed - 3/4 lb.



No. 614

CHARM KNIFE ON KEY CHAIN



Handle - Unbreakable plastic Nu-pearl
 Blade - 1 blade, spear point
 Length Closed - 1 11/16" including clevice
 Tips and Linings - Nickel Silver
 Packed - 1 doz. on a colorful display card as illustrated
 Weight Packed - 1/2 lb.



No. 631

KEY KNIFE AND CHARM KNIFE ASSORTMENT ON KEY CHAINS

This assortment comprises 1/2 dozen of each of the above illustrated knives.
 Packed on a colorful display card.
 Weight packed - 5/8 lb.

MADE IN U. S. A. BY
**CAMILLUS
 CUTLERY
 COMPANY**
 CAMILLUS, N. Y.

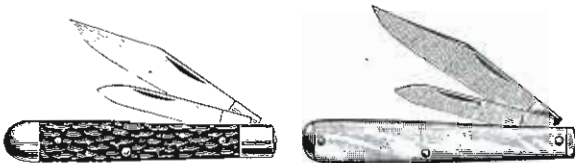
ONE OF THE OLDEST AND LARGEST
 MANUFACTURERS OF KNIVES IN AMERICA

MIDGET POCKET KNIVES by



No. 637

An outstanding PONY JACK KNIFE ASSORTMENT.
Consists of 1/2 dozen of each of the following:



The dozen knives are mounted on attractive easeled display card.

Weight packed - 1 1/4 lb.

No. 637-A

Same as above, but 1 dozen No. 213, stagged and bolstered knives only, on display card.

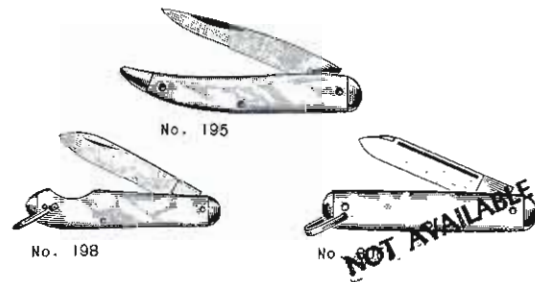
Weight packed - 2 7/8 lb.



No. 638

An assortment of the ever popular MIDGET KNIVES, big enough for real use, small enough to fit on key rings or in purses.

Consists of 1/3 dozen of each of the following:



The dozen midget knives are mounted on colorful easeled display card.
Weight packed - 3/4 lb.

MADE IN U. S. A. BY
**CAMILLUS
CUTLERY
COMPANY**
CAMILLUS, N. Y.

ONE OF THE OLDEST AND LARGEST
MANUFACTURERS OF KNIVES IN AMERICA

THE POPULAR PONY JACK

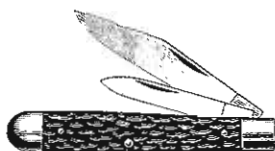


PONY JACKS are always popular, and here is an especially attractive assortment of two sure sellers.

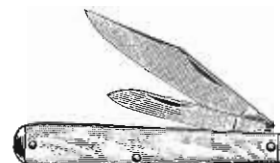
Blades are made of top quality high carbon steel, hand sharpened and fully polished. Handles are solid, unbreakable plastic. Knives are mounted on a colorful display for faster sales.

ASSORTMENT NO. 687

consists of 1/2 dozen of each of the following:



Handle: Stagged
Blades: Clip and pen
Length Closed: 2 7/8 "



Handle: Nu-Pearl
Blades: Clip and pen
Length closed: 2 7/8 "

Weight packed: 1 1/4 lbs.

ASSORTMENT NO. 688

One dozen stagged knives only, mounted on attractive display card.

Weight packed: 1 1/4 lbs.

MADE IN U. S. A. BY
**CAMILLUS
CUTLERY
COMPANY**
CAMILLUS, N. Y.

ONE OF THE OLDEST AND LARGEST
MANUFACTURERS OF KNIVES IN AMERICA

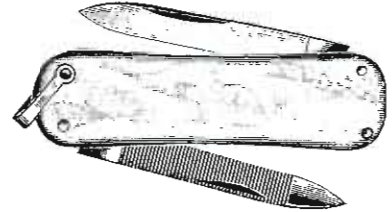
NOVELTY POCKET KNIVES by



No. 623
LOBSTER PATTERN ASSORTMENT

Two blade pen knives with spear blade and flexible file. Nickel silver shackle for attaching to key chain.

Length Closed - 2 1/4"
Packed - 1 dozen on same display card as No. 626
Weight per dozen - 3/4 lbs.



No. 639 NOT AVAILABLE

Well made, attractively finished SWITCHBACK KNIVES. Long clip blades; unbreakable plastic handles; brass linings, nickel silver bolsters.

Assortment consists of 1/2 dozen knives with white onyx handles and 1/2 dozen knives with bright red handles.

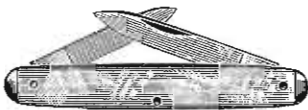
Length closed - 4 3/8"
Mounted on colorful eased display card.
Weight packed - 1 3/4 lb.



No. 642
SENATOR PEN KNIFE Assortment.

Assortment of 1/2 dozen PEN KNIVES 3 1/8" long, closed, and 1/2 dozen SLIM PEN KNIVES with shackle, 2 7/8" long closed. Both knives have spear and pen blades, Nu-Pearl unbreakable plastic handles, nickel silver tips, brass linings.

Mounted on attractive eased display card.
Weight per dozen - 1 lb.



MADE IN U. S. A. BY
**CAMILLUS
CUTLERY
COMPANY**
CAMILLUS, N. Y.

ONE OF THE OLDEST AND LARGEST
MANUFACTURERS OF KNIVES IN AMERICA

NEWEST SENSATION

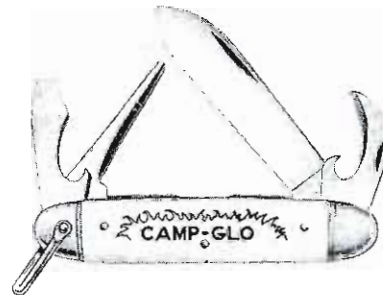
GLO KNIVES by CAMILLUS

Something really new! Knives that glow in the dark*—they're tricky, they're fun, they're practical, they're sensational—and they SELL.



NO. 652 CAMP-GLO ASSORTMENT

A 4-blade camp knife with GLO plastic handles. Large spear blade, hand sharpened and of finest high carbon cutlery steel; can opener blade that leaves a clean edge turned in; a combination screw driver-cap lifter, and a leather punch. Very well finished all over. Nickel silver bolsters and riveted shackle; solid brass linings. Handles hot stamped as illustrated. Plastic thong for attaching to belt. Length closed, 3 $\frac{3}{8}$ ". "Camillus" Brand.



Packed 6 on flashy display card with eye catching DAY-GLO lettering and 6 refills in carton.

Weight packed, 2 $\frac{3}{4}$ lbs.

NO. 647 SPOOK KNIFE ASSORTMENT

A top priority novelty for fun for all. Switchback type knives, with GLO plastic handles carrying the indelible SPOOK imprint. Solid nickel silver bolsters, solid brass linings; well finished. Length closed, 4 $\frac{3}{8}$ ". Camco Brand.

Packed 12 on startling SPOOK display card with eye catching DAY-GLO lettering, in carton.

Weight packed, 1 $\frac{3}{4}$ lbs.



*with short exposure to light every few hours.

†TRADE MARK



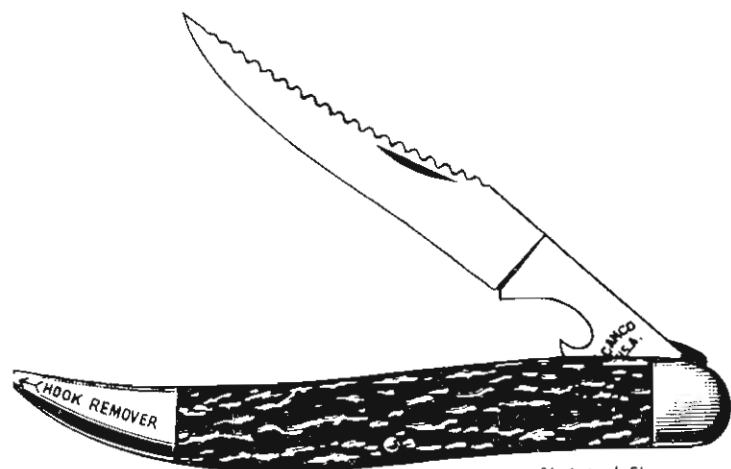
MADE IN U. S. A. BY
**CAMILLUS
CUTLERY
COMPANY**
CAMILLUS, N. Y.

ONE OF THE OLDEST AND LARGEST
MANUFACTURERS OF KNIVES IN AMERICA

NEW fishin' KNIFE

Camco
GOOD QUALITY

— every fish box needs this handy knife



¾ Actual Size

685
NO. 685 ASS'T.

Handle—Unbreakable deep staggged plastic.

Blade—Long clip with scaler and cap lifter.

Linings—Brass with lock to keep blade from closing when in use.

Bolsters—Nickel-silver.

Length closed—5".

Packed—One dozen on a beautiful fish card.

Weight per doz.—2 lbs.

Here's the knife that real fishermen want. Many uses—it will cut, scale, remove hooks, open bottles—and has a lock to keep blade from closing when in use. It will do everything that a high priced fish knife will do yet is priced within reach of every fisherman.

It has solid construction throughout—solid unbreakable non-slip handles—solid brass and nickel-silver rustproof trim—and finest quality steel blade.

Fishing is America's favorite sport and millions of eager fishermen will want to buy this fine fishin' knife.

Packed on new sales-making card that will move knives fast.



MADE IN U.S.A. BY
**CAMILLUS
CUTLERY
COMPANY**
CAMILLUS, N. Y.

ONE OF THE OLDEST AND LARGEST
MANUFACTURERS OF KNIVES IN AMERICA

IMPORTANT ABOUT POSSIBLE CHANGES IN THIS CATALOG

Due to National Production Authority regulations, it will be necessary for us to manufacture pocket knives without using certain critical materials, particularly nickel silver and brass. This changeover will be gradual as stocks of raw material and finished goods are used up.

Each assortment shipped with substitute material will have a slip in it explaining this change. We reserve the right to fill orders as necessary with merchandise using this substitute material.

When substitute material is used, numbers will be changed as follows:

<u>Old No.</u>	<u>New No.</u>	<u>Old No.</u>	<u>New No.</u>	<u>Old No.</u>	<u>New No.</u>	<u>Old No.</u>	<u>New No.</u>
196	126	222	262	637	687	292	272
210	250	227	267	637A	688	307	327
213	253	400	420	638	683	308	328
215	255	614	681	640	685	400A	420A
216	256	623	682	291	271	808	828
						642	684

The items not listed above will not be changed in the near future.

The steel in our blades and springs will not be changed in any way. It will be the same top grade, high carbon cutlery steel we have been using for the past several years.

#170

CAMILIUS CUTLERY COMPANY

CAMILLUS CUTLERY COMPANY



Manufacturers of fine cutlery - founded in 1876 by Adolph Kastor

CAMILLUS, N. Y.

CAMILLUS 2541
SYRACUSE 8-2561

PRICE LIST H
Effective
December 14, 1950
(Printed June 1, 1951)

"CAMCO" POCKET KNIVES

OPEN STOCK

Knife No.	Price to Jobber Per Doz.	Suggested Price to Dealer Per Doz.	Suggested Price to Consumer Per Knife	Knife No.	Price to Jobber Per Doz.	Suggested Price to Dealer Per Doz.	Suggested Price to Consumer Per Knife
100 *	\$12.00	\$16.00	\$2.00	228	\$ 5.00	\$ 6.75	\$.89
101 *	13.50	18.00	2.25	229 **	9.00	12.00	1.50
106	5.40	7.20	.98	291 (271)	4.50	6.00	.75
195 (125)	3.35	4.50	.59	292 (272)	4.50	6.00	.75
196 (126)	3.35	4.50	.59	295 *	10.50	14.00	1.75
197	3.35	4.50	.59	296	5.00	6.75	.89
198	3.35	4.50	.59	307 (327)	8.00	10.75	1.39
210 (250)	5.00	6.75	.89	308 (328)	8.00	10.75	1.39
213 (253)	6.00	8.00	1.00	400A(410A)	7.50	10.00	1.25
215 (255)	5.00	6.75	.89	401 *	9.00	12.00	1.50
216 (256)	5.00	6.75	.89	801	3.50	4.75	.59
222 (262)	4.50	6.00	.75	802	3.50	4.75	.59
227 (267)	7.20	9.60	1.25	808 (828)	6.00	8.00	.98

ASSORTMENTS

400 (410)	7.50	10.00	1.25	642 (684)	4.50	6.00	.75
613	3.35	4.50	.59	647	5.40	7.20	.98
614 (681)	3.35	4.50	.59	648	4.50	6.00	.79
623	5.00	6.75	.89	649	4.50	6.00	.79
637 (687)	5.50	7.50	1.00	650	5.40	7.20	.98
637A(688)	6.00	8.00	1.00	651	5.40	7.20	.98
638 (683)	3.35	4.50	.59	652	9.00	12.00	1.50
640 (685)	6.00	8.00	.98	653	5.00	6.75	.89

* "CAMILLUS" Brand Knives
#100 Florist Knife
#101 Race Knife
#295 Office Knife
#401 Camp-Glo Knife

** ELECTRICIAN'S KNIFE #229
(Full size, Special Tough
Black Plastic Handle)

NOTE: Numbers in parenthesis will apply when knives are made using substitute material for bolsters or linings necessary as a result of National Production Authority regulations.