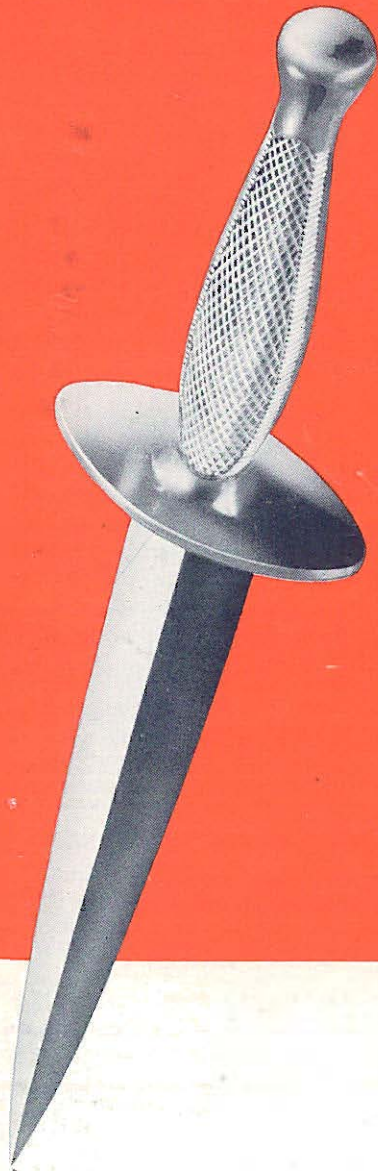


# LIST OF FACILITIES

available  
to you for  
Government &  
Defense orders



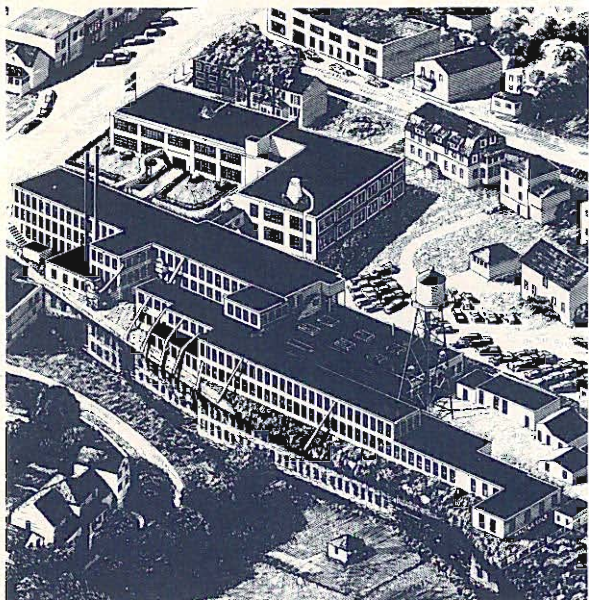
**CAMILLUS CUTLERY COMPANY**

**Camillus, N. Y. (near Syracuse)**

**Phone Syracuse 64-3651**



# our plant



## IN PEACE

In peacetime this plant manufactures the leading line of pocket knives in the country, as well as a complete line of household knives. Modern machines and methods combined with highly skilled workmanship and engineering have made it not only one of the largest mass producers of knives but also the producers of the very finest quality knives.

## IN WAR

Through two World Wars this plant has produced millions of fighting knives, pocket knives, bayonets, kitchen knives, and scalpels. Four Army-Navy "E" Awards attest to its contribution in World War II, during which over 15 million knives were produced and delivered.

Again the Camillus Cutlery Company has rolled up its sleeves and is going to work for Uncle Sam. During the present crisis, facilities are being expanded to handle not only prime government contracts but also to make its facilities available to other Defense manufacturers.

# our manpower

## EFFICIENT LABOR

Our manpower is probably the most important factor in the great productivity of the Camillus Cutlery Company. Approximately 500 skilled men and women together with the "know-how" of an expert engineering staff make every motion count.

## AMPLE LABOR SUPPLY

Located near Syracuse, New York, Camillus is in an industrialized area and has an ample labor supply. About 45% of its employees have been with the company 10 years or more; 23% 20 years or more; 8% 30 years, and several have worked there over 40 years.

## LABOR RELATIONS

Camillus has never suffered a work stoppage or slowdown due to labor relations. A liberal profit sharing plan allows every worker to benefit by high quality and high quantity production. Smooth management - employee relations and fine morale have always been a characteristic of this company.



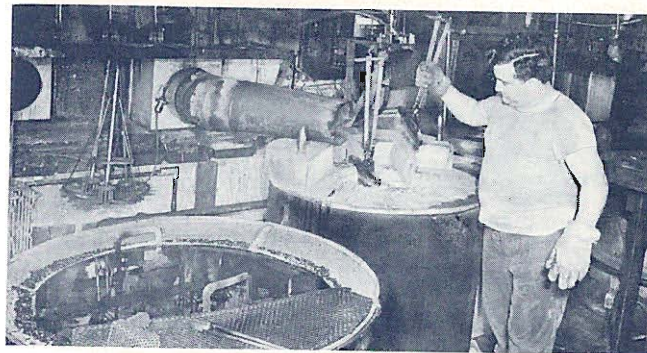
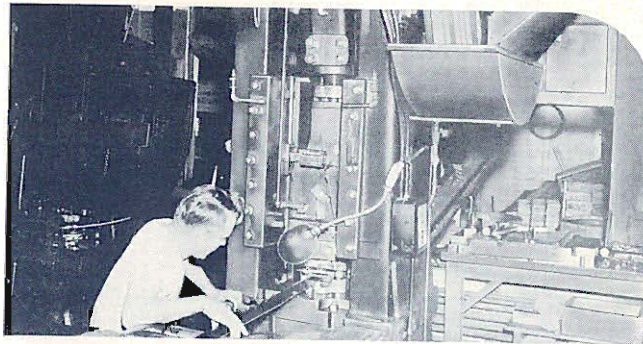
# Camillus Cutlery Company



# our facilities

Our facilities are the most modern for the manufacture of cutlery and are applicable to many other products. The following is a list of those facilities which are available to you.

1. Punch Press Dept. - a complete punch press department with presses up to 100 tons.
2. Forging Hammers - up to 500 lbs.
3. Heat Treating Dept. - complete heat treating department with both pot and box type furnaces for hardening, tempering, annealing, etc.
4. Grinding Dept. - special flat and taper grinding automatic equipment. Numerous specially designed pneumatic machines insure high output.
5. Polishers - automatic reciprocating polishers with 36 inch width rolls can handle products of many different sizes and contours.
6. Hand Polishing & Grinding - large facilities for hand polishing, grinding, and buffing. Approximately 200 employees out of 500 have long experience in this work.
7. Light Assembly - extensive facilities and experience in light assembly (batch, straight-line, or progressive), riveting, staking, etc.
8. Barrel Finishing - barrel finishing or "tumbling" - wet and dry - steel or wood lined.
9. Tool & Die Dept. - complete tool and die departments can furnish tools and dies for any work undertaken in the plant. An experimental laboratory and tool shop is available in development work for new methods or a new product.
10. Quality Control - experienced statistical quality control organization to insure maintenance of rigid quality standards.
11. Engineering - efficient design and administrative engineering group experienced in problems relating to the above.
12. Space - over 100,000 square feet of manufacturing space.
13. Location - located eight miles west of Syracuse on a main truck route and on the New York Central railroad.
14. Liaison - an alert sales force is available for liaison and contact work between your plant and ours.



**CAMILLUS, NEW YORK**  
**( near Syracuse )**

**Phone Syracuse**  
**64 - 3651**



# our experience

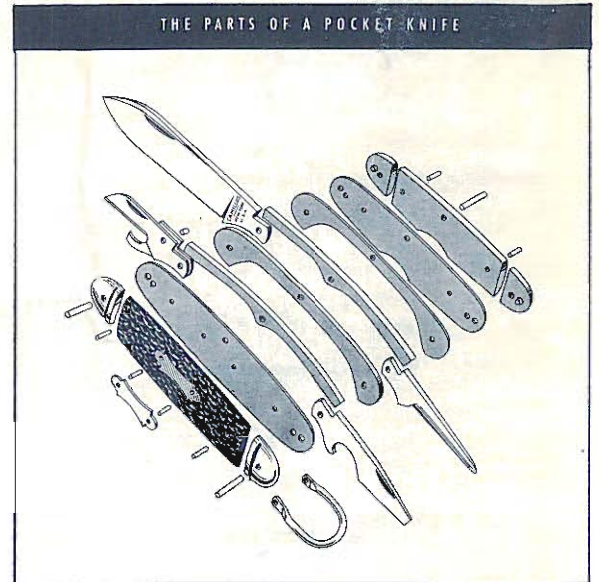
Our experience includes working with many small parts such as illustrated in this "exploded" view of a knife. This means forging, blanking, heat treating, grinding, glazing, and polishing steel.

It means blanking, forming, riveting and polishing nickel-silver and brass. It means forming and shaping plastic and wooden handles.

Once formed, these parts are assembled into a workable knife by hundreds of nimble fingers with years of experience in this type work.

Many of these operations are automatic and many are hand but all are checked and rechecked for conformity by a thorough statistical quality control organization.

Intensive time, rate studies are made and accurate cost records are kept.



# our record

Our record dates back to 1876 . . . 75 years of doing business as leaders in the field.

Our success in peacetime production is measured by the consumer acceptance of the name "CAMILLUS" on a knife, by actual count better than 2 to 1 over any other brand name.

In war our success can be measured by government recognition such as the 4 Army-Navy "E" Awards received during the past war.

Camillus has a conservative but aggressive administration and the soundest financial stability. In the past and at present Camillus can and will "deliver the goods".

**CAMILLUS**

*has the edge!*