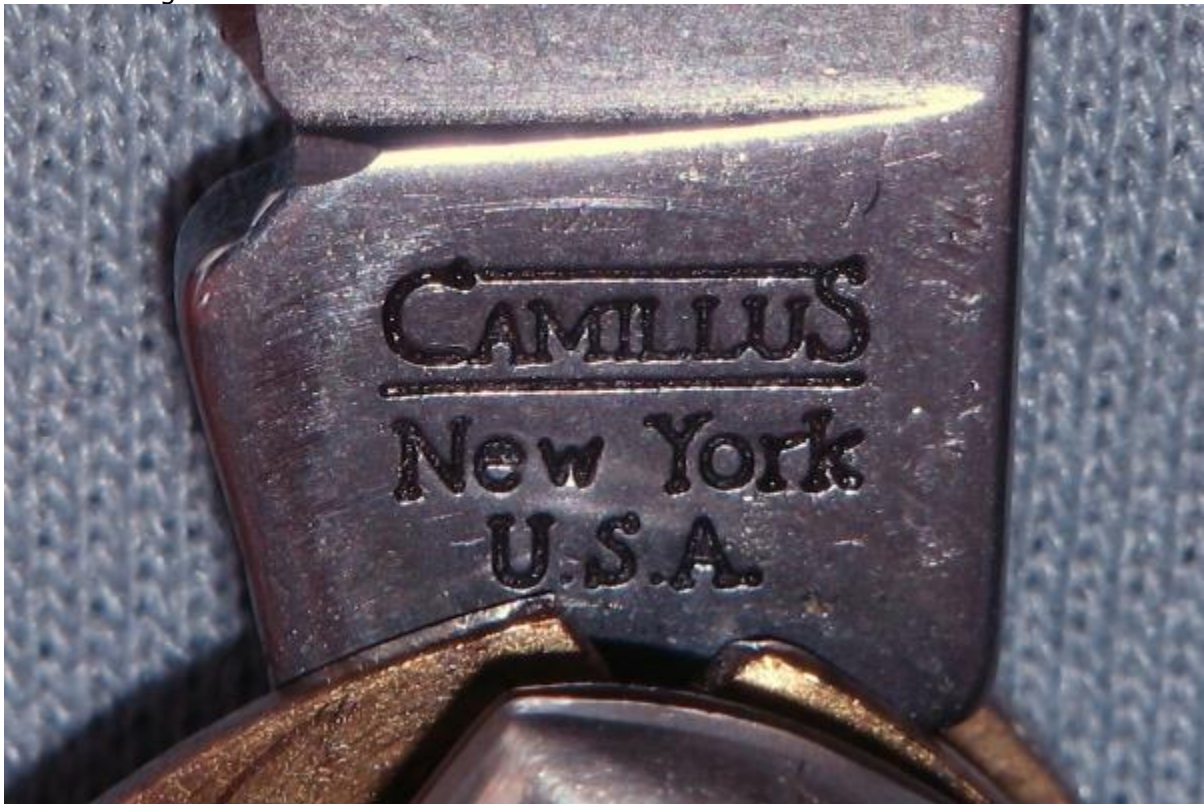


Camillus Tang stamps and dates **acourvil (Art Courvil)**

While we know that Camillus used numerous tang stamps through the years, that it is very hard to date a Camillus knife because tang stamps were frequently changed and sometimes old blades with early stamps were used, I thought it might be of interest to have an illustrated listing of Camillus tang stamps with approximate dates that they were used. So here's a start at that; if you see errors or have other comments, let me know and I will edit as appropriate. With one exception, these all came from electrician's knives (i.e., TL-29 or signal corp. style knives). Except for the first two, which are based on information from this forum, the date references are based on Goins Encyclopedia

Camillus tang markings:

1989-closing



Late 1970s or early 1980s forward (slanted font seen on hunting knife in 1973 catalog; this mark seen on pocket knife in 1988 pamphlet)



1976 forward



1960-1976



1946-1956



1946-1950



1941-1946 example a



1941-1946 example b (questionable origin, might be a fake)



1941-1946 Sword brand (front)



1941-1946 Sword brand (back)



Last edited by acourvil : 02-12-2008 at 02:14 PM. Reason: left one out